



Flying G Ranch Pecan Orchard

Retirement Auction!

On-Site & ONLINE – 8000 E 550 Rd, Claremore, OK 74019

WEDNESDAY, JUNE 5TH - 5PM

CORPORATE OFFICE:

950 N Liberty Dr • Columbia City, IN 46725
800.451.2709 • 260.244.7606

OKLAHOMA OFFICE:

101 N Main Street, Stillwater, OK 74075

AUCTION MANAGERS:

Brent Wellings • 405-332-5505

Charles Brent Wellings, 158091

Schrader Real Estate and Auction Co Inc.

(Branch Office - Stillwater, OK), 172583

Schrader Real Estate and Auction Co Inc., 112774

Rick Miller • 918-313-8039

Terms:

Cash or Check with property ID. 3% sur-
charge fee for credit cards. Announcements
made the day of auction take
precedence over any printed material.
Not responsible for accidents.

10% Buyers Premium on all items.

Follow
us on:



SchraderAuction.com
405.332.5505

Flying G Ranch Pecan Orchard

Retirement Auction!

On-Site & ONLINE – 8000 E 550 Rd, Claremore, OK 74019

- Full Set of In-Line Harvesting Equipment
- John Deere & New Holland Tractors
- Trucks & Trailers
- Tillage Equipment
- Planting Equipment
- Skid Steer & Tractor Attachments
- Misc. Farm & Shop

Clean
Inventory of
Pecan
Harvesting
& Farm
Equipment!

WEDNESDAY, JUNE 5TH - 5PM

SchraderAuction.com | 405.332.5505

Rick Miller | 918-313-8039

10% Buyers Premium
on all items.



Clean Inventory of
Pecan Harvesting &
Farm Equipment!

- Full Set of In-Line Harvesting Equipment
- John Deere & New Holland Tractors
- Trucks & Trailers
- Tillage Equipment
- Planting Equipment
- Skid Steer & Tractor Attachments
- Misc. Farm & Shop



WEDNESDAY, JUNE 5TH - 5PM

SchraderAuction.com | 405.332.5505

Rick Miller | 918-313-8039

10% Buyers Premium
on all items.



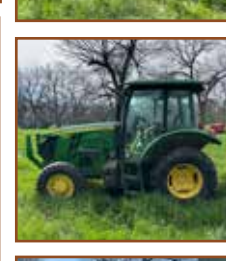


Flying G Ranch Pecan Orchard Retirement Auction!

WEDNESDAY, JUNE 5TH - 5PM

On-Site & ONLINE – 8000 E 550 Rd, Claremore, OK 74019

Clean Inventory of
Pecan Harvesting &
Farm Equipment!



- TRACTORS:**
- 2022 NH Workmaster 75 Tractor w/NH 550LU loader, skid steer attach, 12.5-80-18 fronts, 19.5L-24 rears, 3 pt., 540 pto, 2 remotes, 12 spd., left hand reverser, CHA, air ride seat, buddy seat, 194hrs
 - 2019 JD 5085E Tractor w/Loader, 12.5/80/18 fronts, 19.5/24 rears, 3 pt., 540 pto, 2 remotes, 12 spd., left hand reverser, CHA, 2224hrs
 - 2018 JD 4066R Tractor w/JD 440R loader, JD attach., 260/70/16.5 fronts, 420/85/24 rears, 3 pt., 540 pto, 2 remotes, hydrostat, foot control, auto throttle, 3 ranges, 2302hrs
 - 2014 NH T4.75 Tractor, 9.5L-15 SL fronts, 16.9-28 rears, 3 pt., 540 pto, 2 remotes, 8 spd., left hand reverser, CHA, front weights, 3462hrs
 - 2013 NH TV6070 Bi-Directional Tractor, 16.9/38 tires, rear 3 pt., rear 540/1000 pto, 3 rear remotes, 8 spd. hydrostat, locking diff., Pecan canopy, NH84LB loader included (not mounted), 3205hrs
 - 2000 NH TN65 Tractor w/Loader, showing 890hrs
 - NH TS115A Tractor w/Loader, 7084hrs
 - New Holland TN75D Tractor, (Parts Tractor), Runs, but needs a lot of work, 3629 hrs
 - 2011 Bobcat S850, 14-17.5 tires, CHA, Bullet Proof Glass, Lexan door, hand control, power lock attach., Aux. hyd., Standard Flow, Kubota power, 2735hrs
 - Allis Chalmers 4x4 Tractor (needs repair)
 - Farmall Super M

- TRUCKS & TRAILERS:**
- 2023 International CV515 Truck, 6.6 Duramax, Allison trans., 6 spd., set up for pto but not installed, 4x4, Knapheide Bed, 100 gal. L shape fuel tank w/Fill rite 15gpm pump, B&W Gooseneck hitch, 1388 actual miles (delivery miles). THIS TRUCK HAS NEVER BEEN PUT INTO SERVICE
 - Mack Dump Truck w/Camelback rear-end, 10 spd., Mack power
 - FWD Fire Truck
 - American LaFrance Fire Truck
 - 2015 Ford Expedition – Drivers side rear damage
 - 2008 Toyota Rav 4, showing 228,452 miles
 - 22'+2' Dovetail Equipment Trailer, bumper pull, 2 5/16 ball hitch, elect. brakes
 - (2) Donahue GN Hydraulic Dump Trailers, Tandem Axle, Tandem Dual
 - PJ GN Dump Trailer High-Side
 - (3) Peerless Drying Trailers w/Hydraulic Dump
 - Diamond 5x10 Hydraulic Dump Trailer
 - Homemade Hydraulic Flatbed Trailer

EQUIPMENT PREVIEW DATES:

Saturday, June 1st • 4-7PM

Wednesday, June 5th • 12PM-5PM

EQUIPMENT LOAD-OUT DATES:

Wednesday, June 5th -

following conclusion of bidding

Thursday, June 6th • 9AM-5PM

ORCHARD EQUIPMENT:

- 2017 WeissMcNair 2930 Sweeper, 6 bar head, locking diff., 2 spd., trans., back up camera, JD Power, 789hrs
- 2015 OMC Shockwave Shaker, Mono-boom Shaker, Magnum head-Wet, Hyd. wheel sweeper, Joy Stick Control, 6.7L Cummins Power, 553hrs
- 2020 Weiss McNair 9800P Inline Harvester
- 2020 Weiss McNair Inline Harvester Cart
- (2) Air-O-Fan D2/45 Speed Sprayers – 1000gal., JD Power
- Kershaw Sky Trim 75X, 75 ft. saw, Deutsch diesel, rear winch, push blade, 4x4
- TigerCat 726B Tree Saw, CAT power, 4x4, less than 100 hrs on teeth, AC
- Savage Shaker 2158
- (5) Savage 8261 Harvesters
- Schmeiser Orchard Leveler
- Northwest Tiller RB-120-SC Orchard Tiller
- Savage 8960 Row Vac
- Bergen Pre-Cleaner
- Bergen Hydraulic Dump Cart
- Wizard Manufacturing DeHuller
- GVF Orbit Lift Pruning Tower
- Savage Pre-Cleaner (needs repair)
- Tiger Cat Head Attachment

FARM EQUIPMENT & ATTACHMENTS:

- Rhino Turbo 120 Brush Cutter
- Rhino 4125 12' Flex Brush Cutter
- Vermeer RT650 Trencher w/Backhoe Attachment
- Godwin DRI-PRIME Trailer Mounted Water Pump
- 6' Brown 2620 3 pt tree cutter, 1000 pto
- Sunflower 9312 Drill
- Brush Hog 18' Folding Disc
- McMillen Auger Attachment
- Stumpster Tree Hog Model 48
- Gillison GVF8600 Grapple
- Wylie 200 Gal 3Pt Sprayer
- A1 Mist Sprayer Model 3-Titan
- 3 Pt Grapple • 200 Gallon 3Pt Sprayer
- Krone Hay Cutter, EasyCut 400, 13'
- 10 Wheel Hay Rake
- (2) FMC Speed Sprayers (need repair)
- (2) 40' Shipping Containers
- Adams Fertilizer Cart
- Misc. Scrap Iron
- Much, Much More!!



SPECIAL NOTE:

Premier Real Estate Auction w/Pecan Orchard Selling June 4th!
536+/- Acres offered in 17 Tracts.

SCHRADER
Real Estate and Auction Company, Inc.

Auction Managers:
Brent Wellings: 405-332-5505 & Rick Miller: 918-313-8039

SchraderAuction.com | 405.332.5505

10% Buyers Premium on all items.

LIVE INTERNET BIDDING
Visit SchraderAuction.com for Details
or call 800-451-2709.