



Near Rossville, IL • 20± Miles East of Champaign, IL • 35± Miles West of Lafayette, IN

Vermillion County, Illinois

**THURSDAY, MARCH 19<sup>th</sup>**  
**at 1pm CST / 2pm EST**

**874<sup>±</sup>** acres  
**6 farms**  
**16 tracts**

**Bid on a single tract,  
combination of tracts,  
or the whole property  
in the Schrader  
Method of Auction!**

# Important FARMLAND AUCTION & Wind Income

Contact Auction Company for a detailed Information Booklet including FSA Summaries, Soil Maps, Tax Info, Yield History, Tile Maps, and other information.

Auction held at The Beef House Annex, 16501 North St. Rd. 63, Covington, IN

2% Buyer's Premium



Call or Visit our Website for More Information **800-451-2709** • **SchraderAuction.com**

### Tract Descriptions:

**TRACT 1: 160± AC** mostly all tillable with frontage on CR 470 E and 2600 N. The soils are mostly Elliott and Ashkum. Excellent investment opportunity.

**TRACT 15: WIND INCOME** for Turbines on Tract 1. Contact Auction Company for details.

**TRACT 2: 160± AC** mostly all tillable, with frontage on CR 500 E and 2230 N. The soils are mostly Elliott and Ashkum. Consider combining with Tract 1 for two very desirable tracts near Champaign, IL.

**TRACT 16: WIND INCOME** for Turbines on Tract 2. Contact Auction Company for details.

**TRACT 3: 47± AC** mostly all tillable, with frontage on CR 3700 N. The soils are mostly Ashkum and Elliott soils.



TRACT 1



TRACT 2



126 CPI



122 CPI



124 CPI

**OPEN HOUSE/INSPECTION DATES:**  
Meet a Schrader Representative at Rossville Firestation Meeting Room, 617 N Chicago St, Rossville, IL 60963  
(Located on the north side of Rossville, IL, just off of Hwy 1/Chicago Street.)  
**Monday, February 17<sup>th</sup> • 12 Noon-2pm CST (1pm-3pm EST)**  
**Wednesday, March 4<sup>th</sup> • 9-11am CST (10am-12 Noon EST)**

**TRACT 4: 45± AC** mostly all tillable, with frontage on CR 3780 N. The soils are mostly Ashkum and Elliott soils.

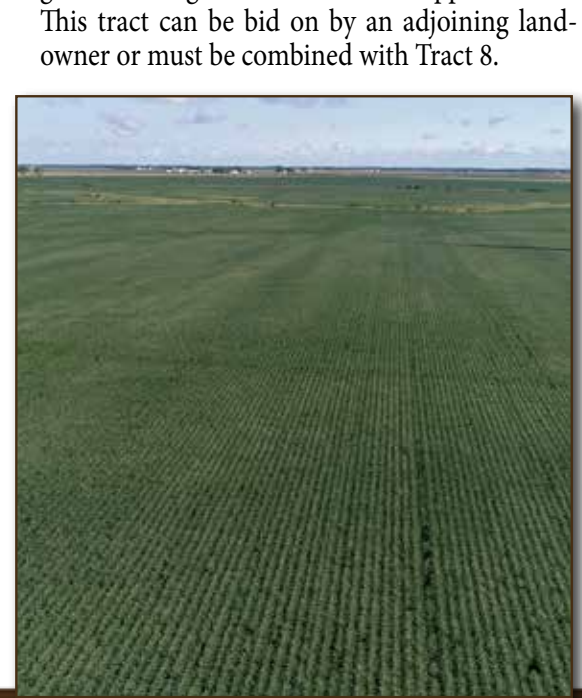
**TRACT 5: 20± AC** mostly all tillable, with frontage on CR 3780 N. The soils are mostly Ashkum and Elliott soils.

**TRACT 6: 55± AC** mostly all tillable, with easement access to CR 3780 N. The soils are mostly Ashkum and La Hogue soils.

**TRACT 7: 101± AC** mostly all tillable, with frontage on CR 3800 N. The soils are mostly Elliott and Jasper soils.

**TRACT 8: 71± AC** mostly all tillable, with frontage on CR 3800 N. The soils are mostly Sawmill and Drummer soils.

**TRACT 9: 10± AC "SWING" TRACT** with great hunting and recreational opportunities. This tract can be bid on by an adjoining landowner or must be combined with Tract 8.



126 CPI



131 CPI

**TRACT 10: 80± AC** mostly all tillable, with frontage on CR 3850 N. The soils are mostly Ashkum and Parr soils.

**TRACT 11: 62± AC** mostly all tillable, with frontage on CR 3850 N. The soils are mostly Andres and Selma soils.

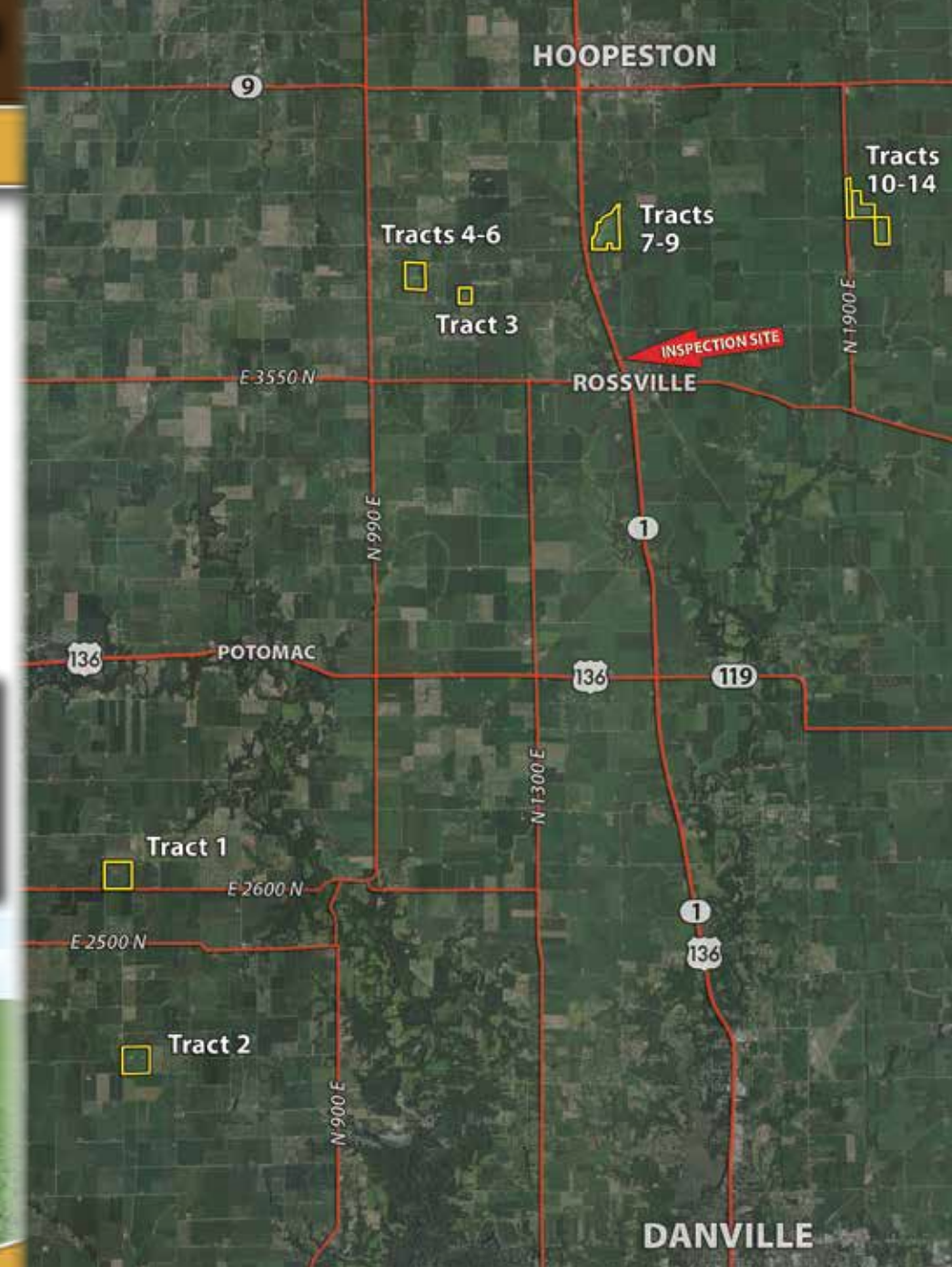
**TRACT 12: 24± AC** mostly all tillable, with frontage on CR 3900 N. The soils are mostly Lisbon and Andres soils.

**TRACT 13: 26± AC** mostly all tillable, with frontage on CR 3850 N, CR 1900 E and CR 3900 N. The soils are mostly Selma and Milford soils.

**TRACT 14: 13± AC** mostly all tillable, with frontage on CR 3900 N and CR 900 E. The soils are mostly Milford and Lisbon soils.



126 CPI



Call or Visit our Website for More Information  
**800-451-2709** • **SchraderAuction.com**



2% Buyer's Premium